

Product Specification

## SPECIFICATION FOR APPROVAL

- (◆) Preliminary Specification  
( ) Final Specification

Title	15.4" WSXGA+ TFT LCD
-------	----------------------

BUYER	
MODEL	

SUPPLIER	LG.Philips LCD CO., Ltd.
*MODEL	LP154W02
SUFFIX	TL10

\*When you obtain standard approval,  
please use the above model name without suffix

SIGNATURE	DATE
_____/_____  	_____  
_____/_____  	_____  
_____/_____  	_____  

Please return 1 copy for your confirmation with your signature and comments.

APPROVED BY	DATE
S.C. YOON/ S.Manager _____	_____  
<b>REVIEWED BY</b>	
Y.S. HA /Manager _____	_____  
<b>PREPARED BY</b>	
S.H. Jang/ Engineer _____	_____  

**Product Engineering Dept.  
LG. Philips LCD Co., Ltd**

**Product Specification**

<b>NO.</b>	<b>ITEM</b>	<b>Page</b>
-	COVER	1
-	CONTENTS	2
-	RECORD OF REVISIONS	3
1	GENERAL DESCRIPTION	4
2	ABSOLUTE MAXIMUM RATINGS	5
3	ELECTRICAL SPECIFICATIONS	
3-1	ELECTRICAL CHARACTERISTICS	6
3-2	INTERFACE CONNECTIONS	8
3-3	SIGNAL TIMING SPECIFICATIONS	10
3-4	SIGNAL TIMING WAVEFORMS	11
3-5	COLOR INPUT DATA REFERENCE	12
3-6	POWER SEQUENCE	13
4	OPTICAL SPECIFICATIONS	14
5	MECHANICAL CHARACTERISTICS	18
6	RELIABILITY	23
7	INTERNATIONAL STANDARDS	24
7-1	SAFETY	24
7-2	EMC	24
8	PACKING	25
8-1	DESIGNATION OF LOT MARK	25
8-2	PACKING FORM	25
8-3	LABEL INFORMATION	26
9	PRECAUTIONS	27



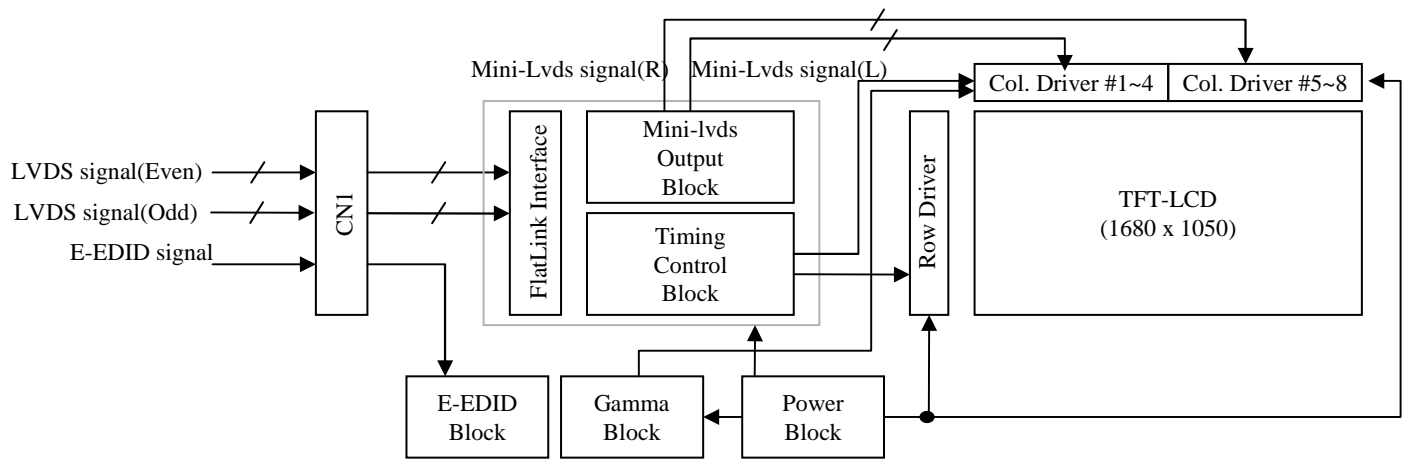
Product Specification

### 1. General Description

The LP154W02 is a Color Active Matrix Liquid Crystal Display with an integral Cold Cathode Fluorescent Lamp(CCFL) backlight system. The matrix employs a-Si Thin Film Transistor as the active element. It is a transmissive type display operating in the normally white mode. This TFT-LCD has 15.4 inches diagonally measured active display area with WSXGA+ resolution(1680 vertical by 1050 horizontal pixel array) Each pixel is divided into Red, Green and Blue sub-pixels or dots which are arranged in vertical stripes. Gray scale or the brightness of the sub-pixel color is determined with a 6-bit gray scale signal for each dot, thus, presenting a palette of more than 262,144 colors.

The LP154W02 has been designed to apply the interface method that enables low power, high speed, low EMI. Flat Link must be used as a LVDS(Low Voltage Differential Signaling) chip.

The LP154W02 is intended to support applications where thin thickness, low power are critical factors and graphic display are important. In combination with the vertical arrangement of the sub-pixels, the LP154W02 characteristics provide an excellent flat display for office automation products such as Notebook PC.



### General Features

Active screen size	15.4 inches diagonal
Outline Dimension	344.0(H)[typ.] x 222.0(V)[typ.] x 6.5(D) mm[Max.]
Pixel Pitch	0.19725 mm x 0.19725mm
Pixel format	1680 horiz. By 1050 vert. Pixels RGB stripes arrangement
Color depth	6-bit, 262,144 colors
Luminance, white	200nit(Center 1point)
Power Consumption	5.92W (Typ.) @ LCM circuit 1.75 Watt(Typ.), B/L input 4.17 Watt(Typ.)
Weight	550g (Typ), 565(Max)
Display operating mode	Transmissive mode, normally white
Surface treatments	Hard coating 2H, Anti-glare, Anti-reflection, Anti-electrostatic treatment of the front polarizer (Nitto Denko AG ARC 150T)
RoHS Comply panel	Yes

**Product Specification**

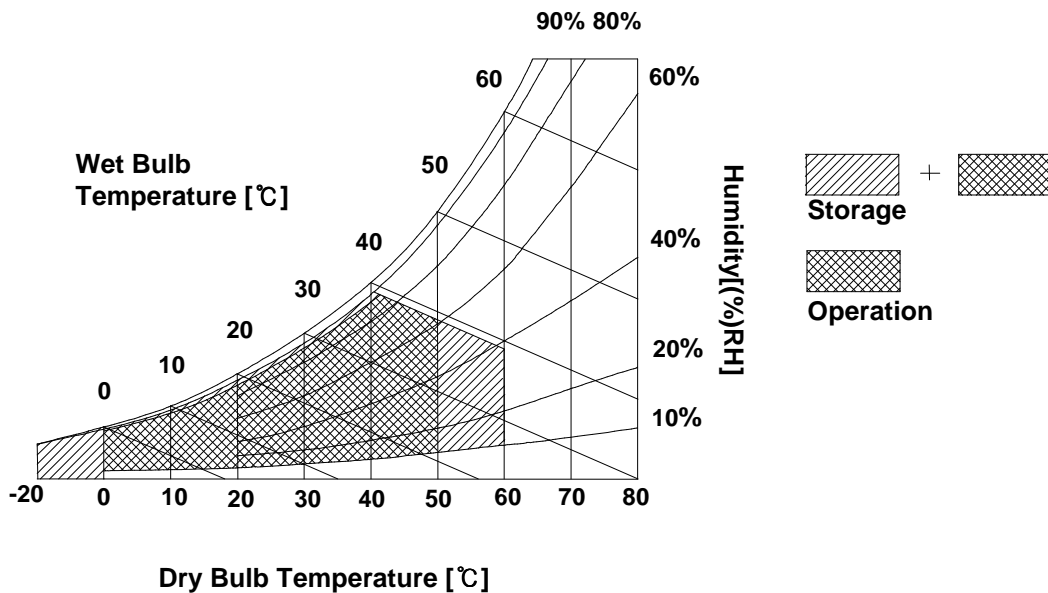
## 2. Absolute Maximum Ratings

The following are maximum values which, if exceeded, may cause operation or damage to the unit.

**Table 1. ABSOLUTE MAXIMUM RATINGS**

Parameter	symbol	Values		Units	Notes
		Min.	Max.		
Power Input Voltage	$V_{CC}$	-0.3	4.0	Vdc	At $25 \pm 5^{\circ}\text{C}$
Operating Temperature	$T_{OP}$	0	50	$^{\circ}\text{C}$	1
Storage Temperature	$T_{ST}$	-20	60	$^{\circ}\text{C}$	1
Operating Ambient Humidity	$H_{OP}$	10	90	%RH	1
Storage Humidity	$H_{ST}$	10	90	%RH	1

Note : 1. Temperature and relative humidity range are shown in the figure below.  
 Wet bulb temperature should be  $39^{\circ}\text{C}$  Max, and no condensation of water.

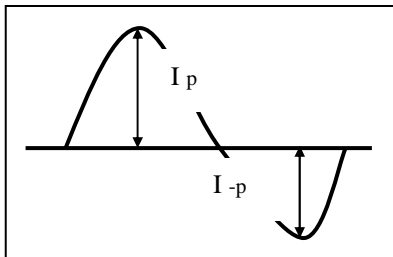




Product Specification

5. The output of the inverter must have symmetrical(negative and positive) voltage waveform and symmetrical current waveform.(Asymmetrical ratio is less than 10%) Please do not use the inverter which has asymmetrical voltage and asymmetrical current and spike wave.  
Lamp frequency may produce interface with horizontal synchronous frequency and as a result this may cause beat on the display. Therefore lamp frequency shall be as away possible from the horizontal synchronous frequency and from its harmonics in order to prevent interference.
6. It is defined the brightness of the lamp after being lighted for 5 minutes as 100%.  
 $T_s$  is the time required for the brightness of the center of the lamp to be not less than 95%.
7. The lamp power consumption shown above does not include loss of external inverter.  
The used lamp current is the lamp typical current.
8. The life is determined as the time at which brightness of the lamp is 50% compared to that of initial value at the typical lamp current on condition of continuous operating at  $25 \pm 2^\circ\text{C}$ .
9. Do not attach a conducting tape to lamp connecting wire.  
If the lamp wire attach to a conducting tape, TFT-LCD Module has a low luminance and the inverter has abnormal action. Because leakage current is occurred between lamp wire and conducting tape.
10. Requirements for a system inverter design, which is intended to have a better display performance, a better power efficiency and a more reliable lamp, are following.  
It shall help increase the lamp lifetime and reduce leakage current.
  - a. The asymmetry rate of the inverter waveform should be less than 10%.
  - b. The distortion rate of the waveform should be within  $\sqrt{2} \pm 10\%$ .

\* Inverter output waveform had better be more similar to ideal sine wave.



\* Asymmetry rate:

$$\frac{|I_p - I_{-p}|}{I_{rms}} * 100\%$$

\* Distortion rate

$$I_p \text{ (or } I_{-p}) / I_{rms}$$

Product Specification

3-2. Interface Connections

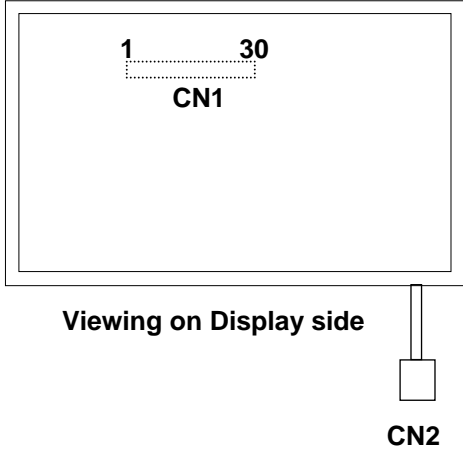
Interface chip must be used FlatLink, part No. THC63LVDF823A(Transmitter made by Thine Inc or equivalence.)

This LCD employs two interface connections, a 30-pin-connector is used for the module electronics and the other connector is used for the integral backlight system.

The electronics interface connector is a model FI-XB30SR-HF11 manufactured by JAE.

The pin configuration for the connector is shown in the table below.

Table 3. MODULE CONNECTOR PIN CONFIGURATION(LVDS)

Pin	Symbol	Description	Notes
1	GND	Ground	<p>1. Interface chips</p> <p>1.1 LCD : DTML012(LCD Controller) including LVDS Receiver</p> <p>1.2 System : THC63LVD823 or equivalent *Pin to Pin compatible with TI LVDS</p> <p>2. Connector</p> <p>2.1 LCD : FI-XB30SR-HF11,JAE or equivalent</p> <p>2.2 Mating : FI-X30M or equivalent.</p> <p>2.3 Connector pin arrangement</p> 
2	Vcc	Power(3.3V)	
3	Vcc	Power(3.3V)	
4	VEDID	DDC 3.3V Power	
5	NC	No connect	
6	CLKEDID	DDC clock	
7	DATAEDID	DDC data	
8	Odd_A1M	Differential Signal	
9	Odd_A1P	Differential Signal	
10	GND	Ground	
11	Odd_A2M	Differential Signal	
12	Odd_A2P	Differential Signal	
13	GND	Ground	
14	Odd_A3M	Differential Signal	
15	Odd_A3P	Differential Signal	
16	GND	Ground	
17	Odd_CLKM	Differential Signal	
18	Odd_CLKP	Differential Signal	
19	GND	Ground	
20	Even_A1M	Differential Signal	
21	Even_A1P	Differential Signal	
22	GND	Ground	
23	Even_A2M	Differential Signal	
24	Even_A2P	Differential Signal	
25	GND	Ground	
26	Even_A3M	Differential Signal	
27	Even_A3P	Differential Signal	
28	GND	Ground	
29	Even_CLKM	Differential Signal	
30	Even_CLKP	Differential Signal	



**Product Specification**

The backlight interface connector is a model BHSR-02VS-1, manufactured by JST or equivalent.  
 The mating connector part number is SM02B-BHSS-1 or equivalent.  
 The pin configuration for the connector is shown in the table below.

**Table 4. BACKLIGHT CONNECTOR PIN CONFIGURATION**

Pin	Symbol	Description	Notes
1	HV	Power supply for lamp (High voltage side)	1
2	LV	Power supply for lamp (Low voltage side)	1

Notes : 1. The high voltage side terminal is colored White. The low voltage side terminal is Yellow.

Product Specification

### 3-3. Signal Timing Specifications

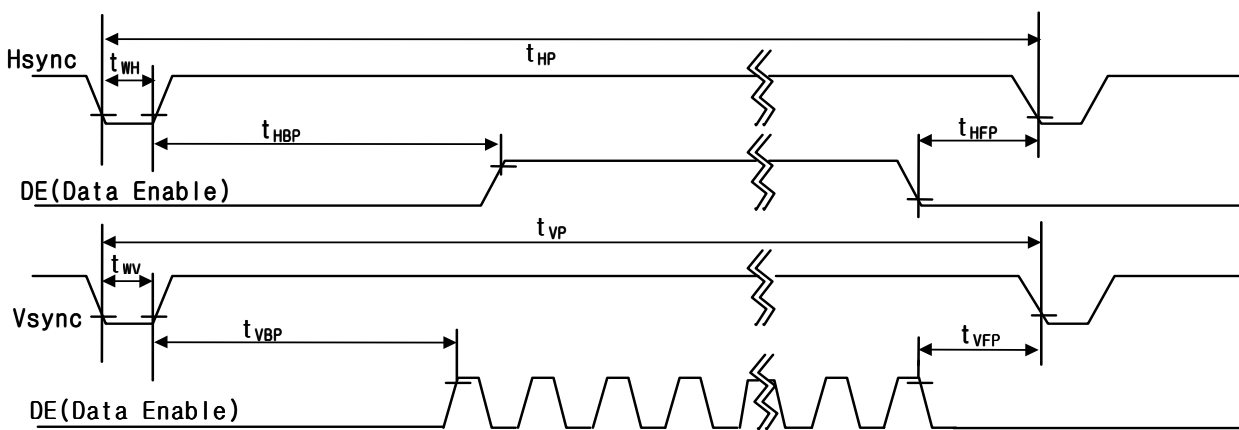
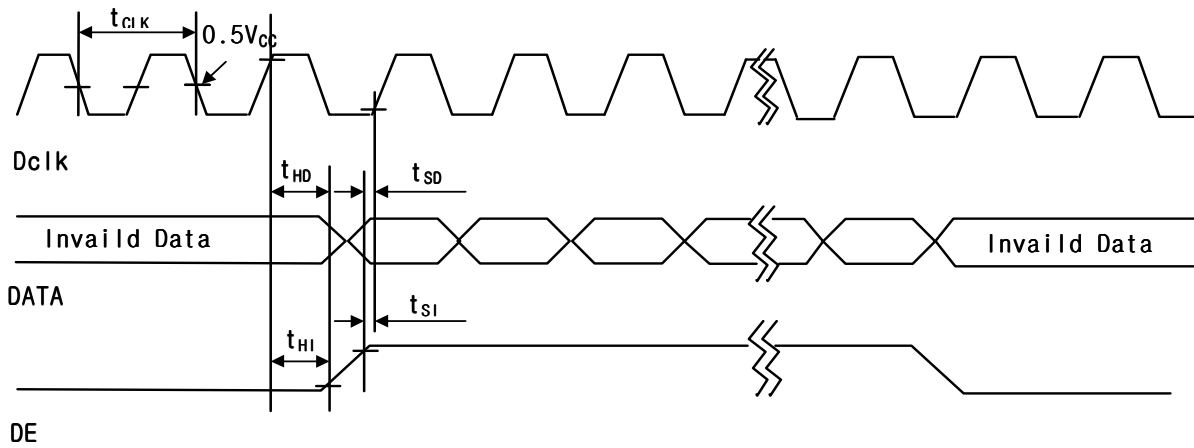
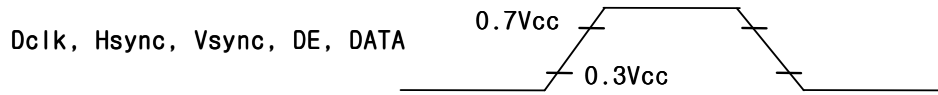
This is the signal timing required at the input of the LVDS Transmitter. All of the interface signal timing should be satisfied with the following specifications for its proper operation.

**Table 6. Timing Table**

ITEM		SYMBOL	MIN	TYP.	MAX.	UNIT	NOTES
Dclk	Frequency	$f_{CLK}$	55	61	67	MHz	
	Width-Low	$t_{WCL}$	3	-	-	ns	
	Width-High	$t_{WCH}$	3	-	-	ns	
	Duty	D	0.4	0.5	0.6		$D = t_{CLKH} / t_{CLK}$
Hsync	Period	$t_{HP}$	864	952	1288	$t_{CLK}$	
	Width	$t_{WH}$	8	32	-	$t_{CLK}$	
Vsync	Period	$t_{VP}$	1057	1066	1082	$t_{HP}$	
	Width active	$t_{WV}$	1	3	-	$t_{HP}$	
DE	Set up Time	$t_{SI}$	3	-	-	ns	For Dclk
	Hold Time	$t_{HI}$	3	-	-		
	Horizontal Back Porch	$t_{HBP}$	8	64	-	$t_{CLK}$	
	Horizontal Front Porch	$t_{HFP}$	8	16	-		
	Vertical Back Porch	$t_{VBP}$	5	12	-	$t_{HP}$	
	Vertical Front Porch	$t_{VFP}$	1	1	-		
DATA	Set up Time	$t_{SD}$	3	-	-	ns	For Dclk
	Hold Time	$t_{HD}$	3	-	-		
Input Voltage	High	$t_{IH}$	0.7Vcc				
	Low	$t_{IL}$			0.3Vcc		

Product Specification

**3-4. Signal Timing Waveforms**



Product Specification

### 3-5. Color Input Data Reference

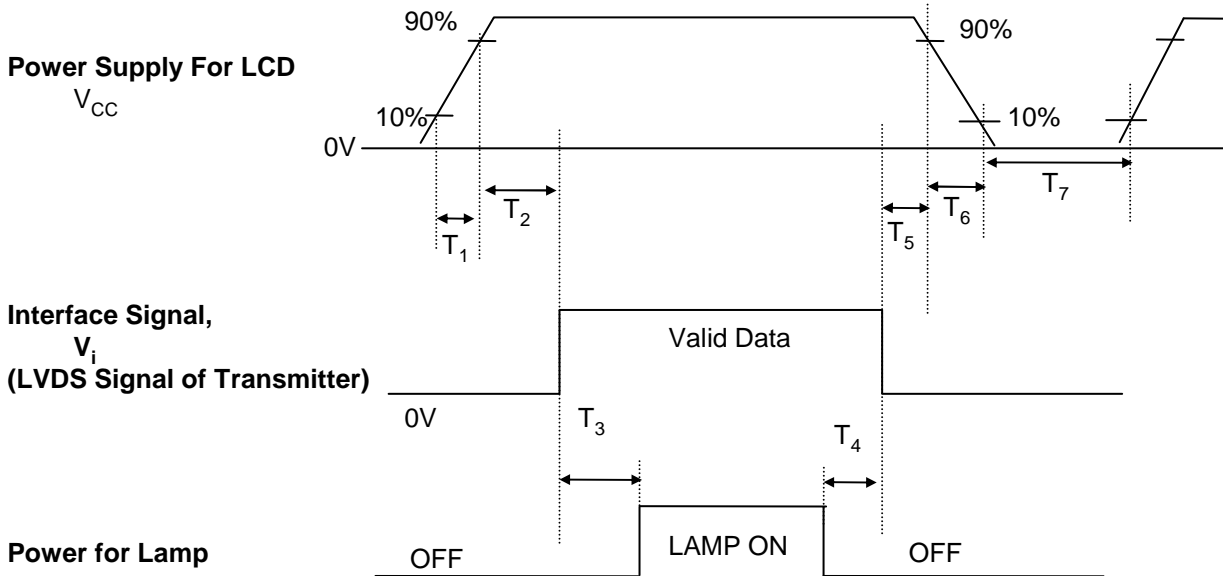
The brightness of each primary color(red,green and blue) is based on the 6-bit gray scale data input for the color ; the higher the binary input, the brighter the color. The table below provides a reference for color versus data input.

**Table 7. COLOR DATA REFERENCE**

Color		Input Color Data																
		Red						Green						Blue				
		MSB			LSB			MSB			LSB			MSB		LSB		
		R5	R4	R3	R2	R1	R0	G5	G4	G3	G2	G1	G0	B5	B4	B3	B2	B1
Basic Colors	Black	0	0	0	0	0	0	0	0	0	0	0	0	0	0	0	0	0
	Red(63)	1	1	1	1	1	1	0	0	0	0	0	0	0	0	0	0	0
	Green(63)	0	0	0	0	0	0	1	1	1	1	1	1	0	0	0	0	0
	Blue(63)	0	0	0	0	0	0	0	0	0	0	0	1	1	1	1	1	1
	Cyan	0	0	0	0	0	0	1	1	1	1	1	1	1	1	1	1	1
	Magenta	1	1	1	1	1	1	0	0	0	0	0	0	1	1	1	1	1
	Yellow	1	1	1	1	1	1	1	1	1	1	1	1	0	0	0	0	0
	White	1	1	1	1	1	1	1	1	1	1	1	1	1	1	1	1	1
Red	Red(00) Dark	0	0	0	0	0	0	0	0	0	0	0	0	0	0	0	0	0
	Red(01)	0	0	0	0	0	1	0	0	0	0	0	0	0	0	0	0	0
	Red(02)	0	0	0	0	1	0	0	0	0	0	0	0	0	0	0	0	0
	:	:	:	:	:	:	:	:	:	:	:	:	:	:	:	:	:	:
	Red(61)	1	1	1	1	0	1	0	0	0	0	0	0	0	0	0	0	0
	Red(62)	1	1	1	1	1	0	0	0	0	0	0	0	0	0	0	0	0
	Red(63) Bright	1	1	1	1	1	1	0	0	0	0	0	0	0	0	0	0	0
Green	Green(00)Dark	0	0	0	0	0	0	0	0	0	0	0	0	0	0	0	0	0
	Green(01)	0	0	0	0	0	0	0	0	0	0	1	0	0	0	0	0	0
	Green(02)	0	0	0	0	0	0	0	0	0	1	0	0	0	0	0	0	0
	:	:	:	:	:	:	:	:	:	:	:	:	:	:	:	:	:	:
	Green(61)	0	0	0	0	0	0	1	1	1	1	0	1	0	0	0	0	0
	Green(62)	0	0	0	0	0	0	1	1	1	1	1	0	0	0	0	0	0
	Green(63)Bright	0	0	0	0	0	0	1	1	1	1	1	1	0	0	0	0	0
Blue	Blue(00) Dark	0	0	0	0	0	0	0	0	0	0	0	0	0	0	0	0	0
	Blue(01)	0	0	0	0	0	0	0	0	0	0	0	0	0	0	0	0	1
	Blue(02)	0	0	0	0	0	0	0	0	0	0	0	0	0	0	0	1	0
	:	:	:	:	:	:	:	:	:	:	:	:	:	:	:	:	:	:
	Blue(61)	0	0	0	0	0	0	0	0	0	0	0	1	1	1	1	0	1
	Blue(62)	0	0	0	0	0	0	0	0	0	0	0	1	1	1	1	1	0
	Blue(63) Bright	0	0	0	0	0	0	0	0	0	0	0	1	1	1	1	1	1

Product Specification

**3-6. Power Sequence**



Parameter	Values			Units
	Min.	Typ.	Max.	
$T_1$	-	-	10	ms
$T_2$	0	-	50	ms
$T_3$	200	-	-	ms
$T_4$	0	-	-	ms
$T_5$	0	-	50	ms
$T_6$	-	-	10	ms
$T_7$	150	-	-	ms

- Notes :**
1. Please avoid floating state of interface signal at invalid period.
  2. When the interface signal is invalid, be sure to pull down the power supply for LCD  $V_{CC}$  to 0V.
  3. Lamp power must be turn on after power supply for LCD and interface signal are valid.

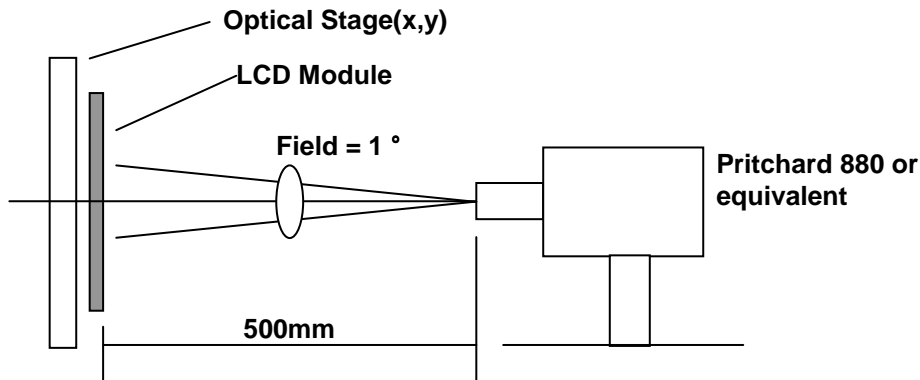
Product Specification

#### 4. Optical Specification

Optical characteristics are determined after the unit has been 'ON' and stable for approximately 30 minutes in a dark environment at 25 °C. The values specified are at an approximate distance 50cm from the LCD surface at a viewing angle of  $\Phi$  and  $\theta$  equal to 0 °.

FIG. 1 presents additional information concerning the measurement equipment and method.

**FIG. 1 Optical Characteristic Measurement Equipment and Method**



( $T_a=25\text{ °C}$ ,  $V_{CC}=3.3V$ ,  $f_v=60Hz$   
 $Dclk=60.9MHz$ ,  $I_{BL}=6.0mA$ )

**Table 8. OPTICAL CHARACTERISTICS**

Parameter	Symbol	Values			Units	Notes
		Min.	Typ.	Max.		
Contrast Ratio	CR	300	500	-		1
Surface Luminance, white	$L_{WH}$	170	200		cd/m <sup>2</sup>	2
Luminance % uniformity	$\delta_{WHITE}$	50	55	-	%	3
Response Time	$T_r$					4
Rise Time + Decay Time	$T_{r+T_d}$	-	25	40	ms	
CIE Color Coordinates						
Red	XR	0.559	0.589	0.619		$\pm 0.03$
	YR	0.315	0.345	0.375		$\pm 0.03$
Green	XG	0.297	0.327	0.357		$\pm 0.03$
	YG	0.514	0.544	0.574		$\pm 0.03$
Blue	XB	0.127	0.157	0.187		$\pm 0.03$
	YB	0.111	0.141	0.171		$\pm 0.03$
White	XW	0.285	0.313	0.341		$\pm 0.028$
	YW	0.309	0.329	0.349		$\pm 0.020$
Viewing Angle						
x axis, right ( $\phi=0^\circ$ )	$\theta_r$	60	65			5
x axis, left ( $\phi=180^\circ$ )	$\theta_l$	60	65			
y axis, up ( $\phi=90^\circ$ )	$\theta_u$	40	50		degree	
y axis, down ( $\phi=270^\circ$ )	$\theta_d$	50	50			
Gray Scale	-	-	2.2	-		6

Product Specification

Notes : 1. Contrast Ratio(CR) is defined mathematically as :

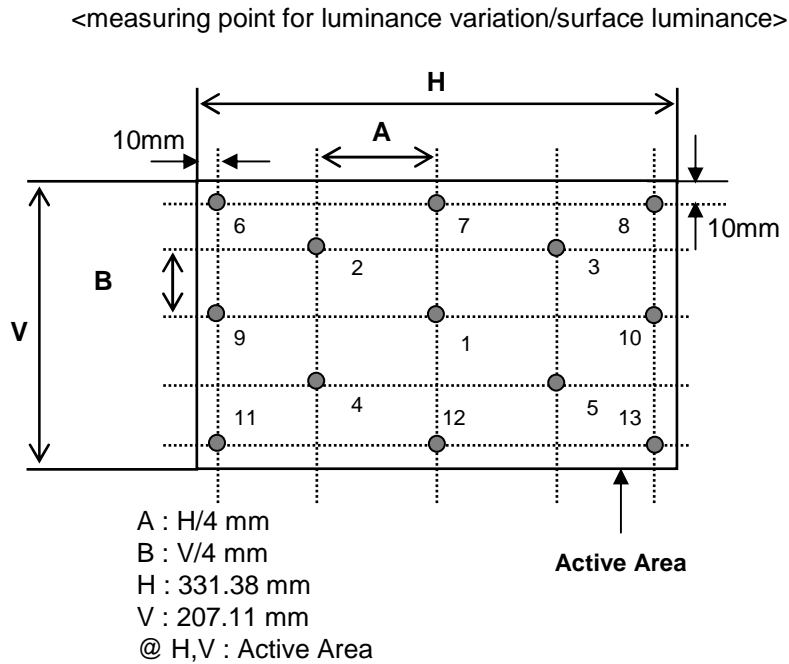
$$\text{Contrast Ratio} = \frac{\text{Surface Luminance with all white pixels}}{\text{Surface Luminance with all black pixels}}$$

2. Surface luminance is the center point across the LCD surface 50cm from the surface with all pixels displaying white. For more information see FIG 2.  
When  $I_{BL} = 6.0\text{mA}$ ,
3. Luminance % uniformity is measured for 13 point For more information see FIG 2.  
 $\delta \text{ WHITE} = (\text{Minimum}(\text{LN1, LN2, ..... LN13}) \div \text{Maximum}(\text{LN1, LN2, ..... LN13})) \times 100\%$
4. Response time is the time required for the display to transition from white to black(Rise Time,  $Tr_R$ ) and from black to white(Decay Time,  $Tr_D$ ). For additional information see FIG 3.
5. Viewing angle is the angle at which the contrast ratio is greater than 10. The angles are determined for the horizontal or x axis and the vertical or y axis with respect to the z axis which is normal to the LCD surface. For more information see FIG 4.
6. Gray scale specification \* fV=60Hz

Gray Level	Luminance(%) (Typ.)
L0	0.0
L7	1.0
L15	5.0
L23	12.0
L31	21.0
L39	35.0
L47	52.0
L55	74.0
L63	100

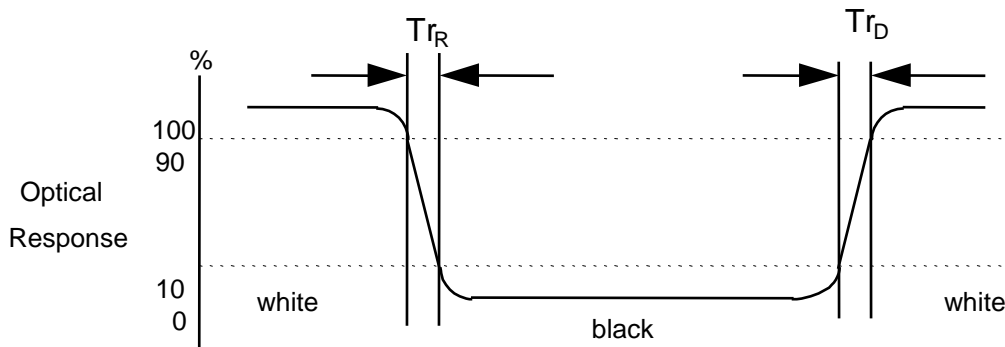
Product Specification

**FIG. 2 Luminance**



**FIG. 3 Response Time**

The response time is defined as the following figure and shall be measured by switching the input signal for "black" and "white".

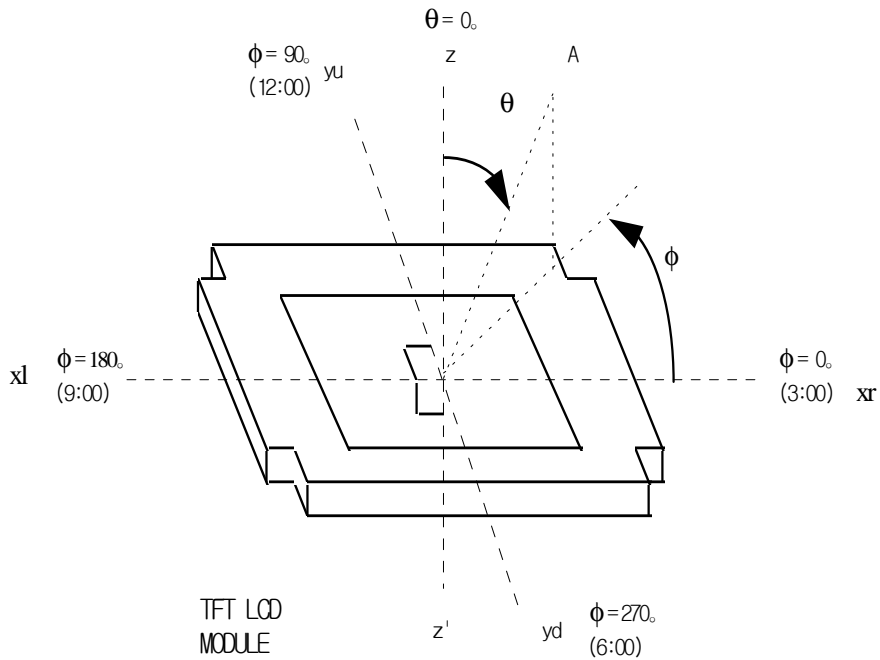




Product Specification

**FIG. 4 Viewing angle**

<dimension of viewing angle range>



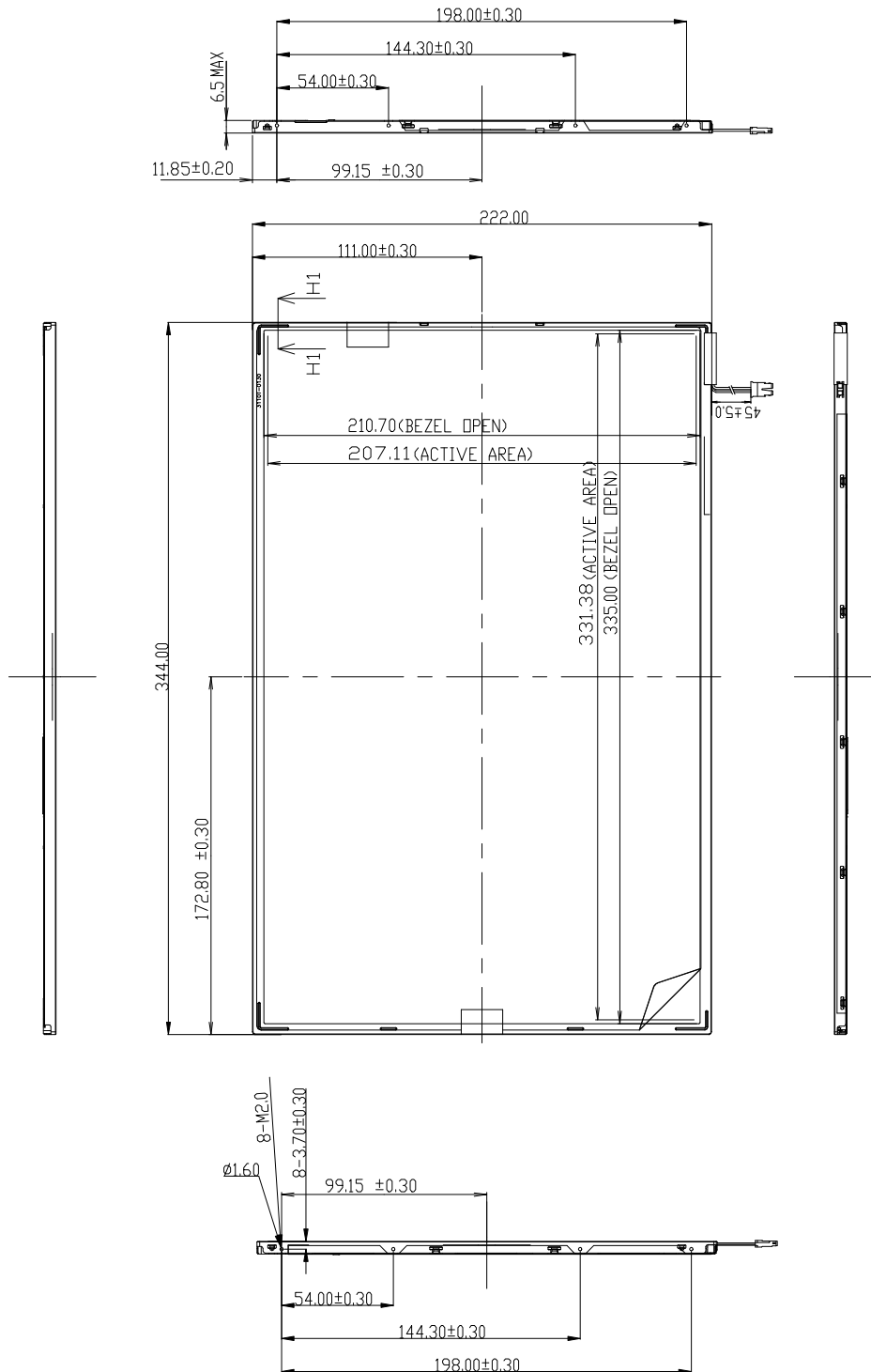
A : Eye of Observer



**Product Specification**

<FRONT VIEW>

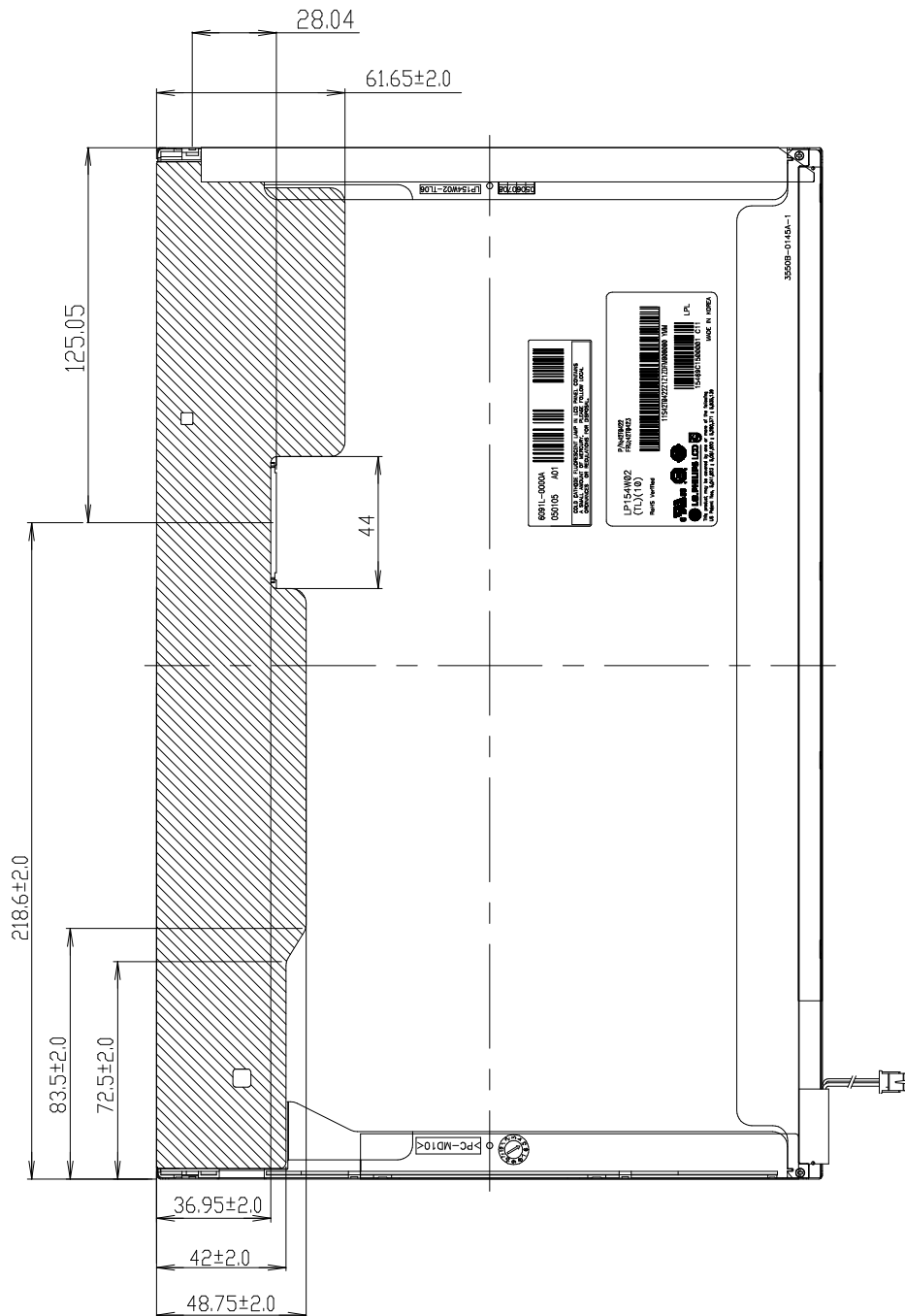
Note) Unit:[mm], General tolerance: ± 0.5mm



**Product Specification**

<REAR VIEW>

Note) Unit:[mm], General tolerance:  $\pm 0.5\text{mm}$









## Product Specification

## 7. International Standards

### 7-1. Safety

- a) UL 60950-1:2003, First Edition, Underwriters Laboratories, Inc., Standard for Safety of Information Technology Equipment.
- b) CAN/CSA C22.2, No. 60950-1-03 1<sup>st</sup> Ed. April 1, 2003, Canadian Standards Association, Standard for Safety of Information Technology Equipment.
- c) EN 60950-1:2001, First Edition, European Committee for Electrotechnical Standardization(CENELEC) European Standard for Safety of Information Technology Equipment.

### 7-2. EMC

- a) ANSI C63.4 "Methods of Measurement of Radio-Noise Emissions from Low-Voltage Electrical and Electrical Equipment in the Range of 9kHz to 40GHz. "American National Standards Institute(ANSI), 1992
- b) C.I.S.P.R. "Limits and Methods of Measurement of Radio Interface Characteristics of Information Technology Equipment." International Special Committee on Radio Interference.
- c) EN 55022 "Limits and Methods of Measurement of Radio Interface Characteristics of Information Technology Equipment." European Committee for Electrotechnical Standardization.(CENELEC), 1998 ( Including A1: 2000 )



Product Specification

### 8-1. Designation of Lot Mark

a) Lot Mark

A	B	C	D	E	F	G	H	I	J	K	L	M
---	---	---	---	---	---	---	---	---	---	---	---	---

A,B,C : SIZE(INCH)  
E : MONTH

D : YEAR  
F ~ M : SERIAL NO.

Note

1. YEAR

Year	2001	2002	2003	2004	2005	2006	2007	2008	2009	2010
Mark	1	2	3	4	5	6	7	8	9	0

2. MONTH

Month	Jan	Feb	Mar	Apr	May	Jun	Jul	Aug	Sep	Oct	Nov	Dec
Mark	1	2	3	4	5	6	7	8	9	A	B	C

b) Location of Lot Mark

Serial No. is printed on the label. The label is attached to the backside of the LCD module.  
This is subject to change without prior notice.

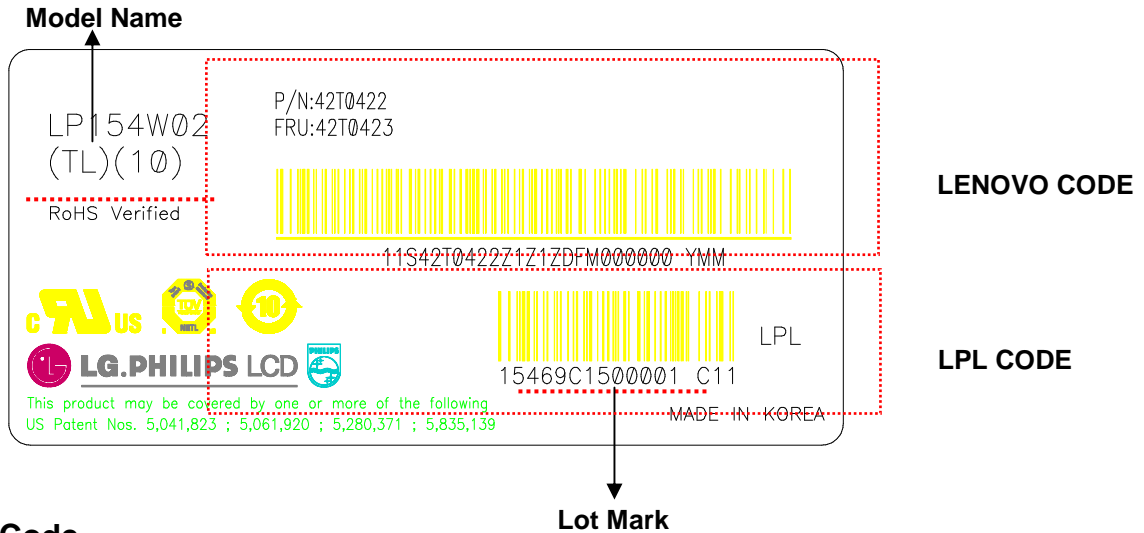
### 8-2. Packing Form

a) Package quantity in one box : 10 pcs

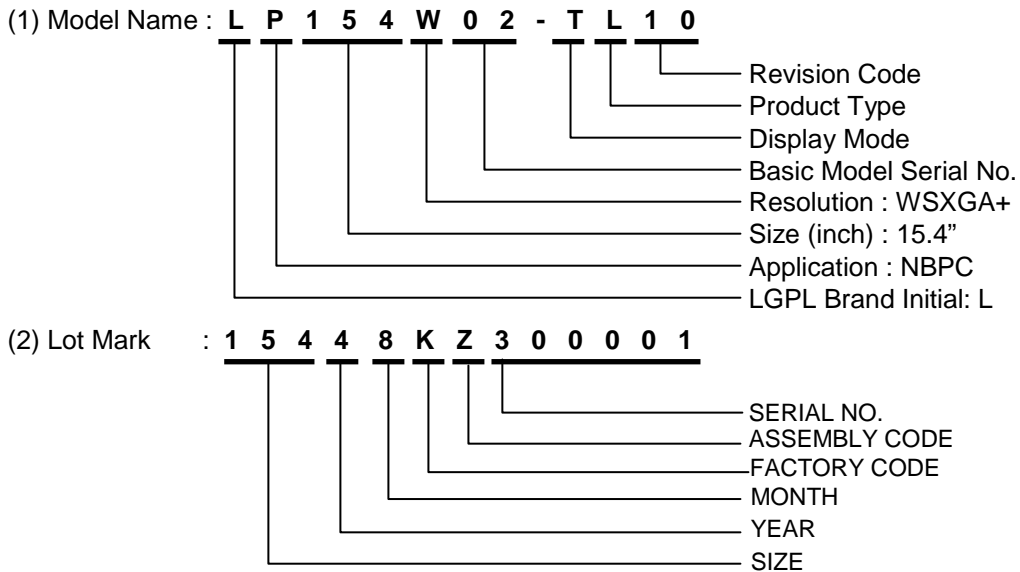
b) Box Size : 441mm × 373mm × 348mm

**Product Specification**

**8-3. Label Description**



**LPL Code**



**LENOVO Code**

- 1) LENOVO P/N : 42T0422
- 2) FRU P/N : 42T0423

## Product Specification

## 9. PRECAUTIONS

Please pay attention to the following when you use this TFT LCD module.

### 9-1. MOUNTING PRECAUTIONS

- (1) You must mount a module using holes arranged in four corners or four sides.
- (2) You should consider the mounting structure so that uneven force(ex. Twisted stress) is not applied to the module.  
And the case on which a module is mounted should have sufficient strength so that external force is not transmitted directly to the module.
- (3) Please attach a transparent protective plate to the surface in order to protect the polarizer.  
Transparent protective plate should have sufficient strength in order to resist external force.
- (4) You should adopt radiation structure to satisfy the temperature specification.
- (5) Acetic acid type and chlorine type materials for the cover case are not describe because the former generates corrosive gas of attacking the polarizer at high temperature and the latter causes circuit break by electro-chemical reaction.
- (6) Do not touch, push or rub the exposed polarizers with glass, tweezers or anything harder than HB pencil lead. And please do not rub with dust clothes with chemical treatment.  
Do not touch the surface of polarizer for bare hand or greasy cloth.(Some cosmetics are determined to the polarizer.)
- (7) When the surface becomes dusty, please wipe gently with absorbent cotton or other soft materials like chamois soaks with petroleum benzene. Normal-hexane is recommended for cleaning the adhesives used to attach front / rear polarizers. Do not use acetone, toluene and alcohol because they cause chemical damage to the polarizer.
- (8) Wipe off saliva or water drops as soon as possible. Their long time contact with polarizer causes deformations and color fading.
- (9) Do not open the case because inside circuits do not have sufficient strength.

### 9-2. OPERATING PRECAUTIONS

- (1) The spike noise causes the mis-operation of circuits. It should be lower than following voltage :  
 $V = \pm 200\text{mV}$ (Over and under shoot voltage)
- (2) Response time depends on the temperature.(In lower temperature, it becomes longer.)
- (3) Brightness depends on the temperature. (In lower temperature, it becomes lower.)  
And in lower temperature, response time(required time that brightness is stable after turned on) becomes longer.
- (4) Be careful for condensation at sudden temperature change. Condensation makes damage to polarizer or electrical contacted parts. And after fading condensation, smear or spot will occur.
- (5) When fixed patterns are displayed for a long time, remnant image is likely to occur.
- (6) Module has high frequency circuits. Sufficient suppression to the electromagnetic interference shall be done by system manufacturers. Grounding and shielding methods may be important to minimized the interference.

## Product Specification

### 9-3. ELECTROSTATIC DISCHARGE CONTROL

Since a module is composed of electronic circuits, it is not strong to electrostatic discharge. Make certain that treatment persons are connected to ground through wrist band etc. And don't touch interface pin directly.

### 9-4. PRECAUTIONS FOR STRONG LIGHT EXPOSURE

Strong light exposure causes degradation of polarizer and color filter.

### 9-5. STORAGE

When storing modules as spares for a long time, the following precautions are necessary.

- (1) Store them in a dark place. Do not expose the module to sunlight or fluorescent light. Keep the temperature between 5°C and 35°C at normal humidity.
- (2) The polarizer surface should not come in contact with any other object.  
It is recommended that they be stored in the container in which they were shipped.

### 9-6. HANDLING PRECAUTIONS FOR PROTECTION FILM

- (1) When the protection film is peeled off, static electricity is generated between the film and polarizer. This should be peeled off slowly and carefully by people who are electrically grounded and with well ion-blown equipment or in such a condition, etc.
- (2) The protection film is attached to the polarizer with a small amount of glue. If some stress is applied to rub the protection film against the polarizer during the time you peel off the film, the glue is apt to remain on the polarizer.  
Please carefully peel off the protection film without rubbing it against the polarizer.
- (3) When the module with protection film attached is stored for a long time, sometimes there remains a very small amount of glue still on the polarizer after the protection film is peeled off.
- (4) You can remove the glue easily. When the glue remains on the polarizer surface or its vestige is recognized, please wipe them off with absorbent cotton waste or other soft material like chamois soaked with normal-hexane.

Product Specification

APPENDIX A. Enhanced Extended Display Identification Data (EEDID™) 1/3

LP154W02-TL10 E-EDID(BF) DATA (Ver0.0) '070306						
		LG LP154W02			2007-03-06	
Byte# (decimal)	Byte# (HEX)	Field Name and Comments	Value (HEX)	Value (binary)	Data	
0	0	Header	0 0	0000 0000		Header
1	1	Header	F F	1111 1111		
2	2	Header	F F	1111 1111		
3	3	Header	F F	1111 1111		
4	4	Header	F F	1111 1111		
5	5	Header	F F	1111 1111		
6	6	Header	F F	1111 1111		
7	7	Header	0 0	0000 0000		
8	8	ID system Manufacturer Name	2 4	0010 0100	IBM	Vender/ Product ID
9	9	Compressed ASCII	4 D	0100 1101		
10	0A	ID Product Code	8 7	1000 0111		
11	0B	ID Product Code	2 8	0010 1000	#WSXGA+	
12	0C	LCD Module Serial No. = 0 (If not used)	0 0	0000 0000		
13	0D	LCD Module Serial No. = 0 (If not used)	0 0	0000 0000		
14	0E	LCD Module Serial No. = 0 (If not used)	0 0	0000 0000		
15	0F	LCD Module Serial No. = 0 (If not used)	0 0	0000 0000		
16	10	Week of Manufacture	0 0	0000 0000	0	
17	11	Year of Manufacture	0 F	0000 1111	2005	
18	12	EDID Structure version	0 1	0000 0001	1	EDID Version/ Revision
19	13	EDID Revision	0 3	0000 0011	3	
20	14	Video Input Definition = Digital I/P.non TMDS CRGB	8 0	1000 0000		Display Parameter
21	15	Max H image size(cm) = 33.12cm	2 1	0010 0001	33	
22	16	Max V image size(cm) = 20.70cm	1 5	0001 0101	21	
23	17	Display gamma	7 8	0111 1000	2.2	
24	18	Feature support(DPMS) = Active off, RGB Color	0 A	0000 1010		Color Characteristic
25	19	Red/Green low Bits	B C	1011 1100		
26	1A	Blue/White Low Bits	A 5	1010 0101		
27	1B	Red X	9 8	1001 1000	0.595	
28	1C	Red Y	5 8	0101 1000	0.345	
29	1D	Green X	5 5	0101 0101	0.332	
30	1E	Green Y	8 B	1000 1011	0.544	
31	1F	Blue X	2 8	0010 1000	0.157	
32	20	Blue Y	2 4	0010 0100	0.141	
33	21	White X	5 0	0101 0000	0.313	
34	22	White Y	5 4	0101 0100	0.329	
35	23	Established Timing I = 00h(If not used)	0 0	0000 0000		Established Timings
36	24	Established Timing II = 00h(If not used)	0 0	0000 0000		
37	25	Manufacturer's Timings = 00h(If not used)	0 0	0000 0000		
38	26	Standard Timing Identification 1 was not used	0 1	0000 0001		Standard Timing ID
39	27	Standard Timing Identification 1 was not used	0 1	0000 0001		
40	28	Standard Timing Identification 2 was not used	0 1	0000 0001		
41	29	Standard Timing Identification 2 was not used	0 1	0000 0001		
42	2A	Standard Timing Identification 3 was not used	0 1	0000 0001		
43	2B	Standard Timing Identification 3 was not used	0 1	0000 0001		
44	2C	Standard Timing Identification 4 was not used	0 1	0000 0001		
45	2D	Standard Timing Identification 4 was not used	0 1	0000 0001		
46	2E	Standard Timing Identification 5 was not used	0 1	0000 0001		
47	2F	Standard Timing Identification 5 was not used	0 1	0000 0001		
48	30	Standard Timing Identification 6 was not used	0 1	0000 0001		
49	31	Standard Timing Identification 6 was not used	0 1	0000 0001		
50	32	Standard Timing Identification 7 was not used	0 1	0000 0001		
51	33	Standard Timing Identification 7 was not used	0 1	0000 0001		
52	34	Standard Timing Identification 8 was not used	0 1	0000 0001		
53	35	Standard Timing Identification 8 was not used	0 1	0000 0001		

Product Specification

APPENDIX A. Enhanced Extended Display Identification Data (EEDID™) 2/3

54	36	Pixel Clock/10,000 (LSB)	1	C	0001	1100	120.6Mhz	Timing Descriptor #1	
55	37	Pixel Clock/10,000 (MSB) / 59.98hz	2	F	0010	1111			
56	38	Horizontal Active	9	0	1001	0000	1680 pixels		
57	39	Horizontal Blanking	D	0	1101	0000	208 pixels		
58	3A	Horizontal Active : Horizontal Blanking	6	0	0110	0000			
59	3B	Vertical Active	1	A	0001	1010	1050 lines		
60	3C	Vertical Blanking	0	F	0000	1111	15 lines		
61	3D	Vertical Active : Vertical Blanking	4	0	0100	0000			
62	3E	Horizontal Sync. Offset	2	0	0010	0000	32 pixels		
63	3F	Horizontal Sync Pulse Width	3	0	0011	0000	48 pixels		
64	40	Vertical Sync Offset : Sync Width	1	3	0001	0011	1/3 lines		
65	41	Horizontal Vertical Sync Offset/Width upper 2bits = 0	0	0	0000	0000	0		
66	42	Horizontal Image Size = 331.2 mm	4	B	0100	1011	331		
67	43	Vertical Image Size = 207.0mm	C	F	1100	1111	207		
68	44	Horizontal & Vertical Image Size	1	0	0001	0000			
69	45	Horizontal Border = 0	0	0	0000	0000			
70	46	Vertical Border = 0	0	0	0000	0000			
71	47	Non-interlaced, Normal display, no stereo, Digital separate sync, H/V pol negatives	1	9	0001	1001			
72	48	Pixel Clock/10,000 (LSB) 50-hz	4	5	0100	0101	100.536		Timing Description #2
73	49	Pixel Clock/10,000 (MSB) / 50-hz	2	7	0010	0111			
74	4A	Horizontal Active	9	0	1001	0000	1680 pixels		
75	4B	Horizontal Blanking	D	0	1101	0000	208 pixels		
76	4C	Horizontal Active : Horizontal Blanking	6	0	0110	0000			
77	4D	Vertical Active	1	A	0001	1010	1050 lines		
78	4E	Vertical Blanking	0	F	0000	1111	15 lines		
79	4F	Vertical Active : Vertical Blanking	4	0	0100	0000			
80	50	Horizontal Sync. Offset	2	0	0010	0000	32 pixels		
81	51	Horizontal Sync Pulse Width	3	0	0011	0000	48 pixels		
82	52	Vertical Sync Offset : Sync Width	1	3	0001	0011	1/3 lines		
83	53	Horizontal Vertical Sync Offset/Width upper 2bits = 0	0	0	0000	0000	0		
84	54	Horizontal Image Size = 331.2 mm	4	B	0100	1011	331		
85	55	Vertical Image Size = 207.0mm	C	F	1100	1111	207		
86	56	Horizontal & Vertical Image Size	1	0	0001	0000			
87	57	Horizontal Border = 0	0	0	0000	0000			
88	58	Vertical Border = 0	0	0	0000	0000			
89	59	Non-interlaced, Normal display, no stereo, Digital separate sync, H/V pol negatives	1	9	0001	1001			
90	5A	Detailed Timing Descriptor #3	0	0	0000	0000	0	Timing Description #3	
91	5B		0	0	0000	0000	0		
92	5C		0	0	0000	0000	0		
93	5D		0	F	0000	1111	15		
94	5E		0	0	0000	0000	0		
95	5F	(Horizontal active pixel /8)-31	B	3	1011	0011	179		
96	60	Image Aspect Ratio(16:10)	0	A	0000	1010	16 : 10		
97	61	Low Refresh Rate #1(50-hz)	3	2	0011	0010	50		
98	62	(Horizontal active pixel /8)-31	B	3	1011	0011	179		
99	63	Image Aspect Ratio(16:10)	0	A	0000	1010	16 : 10		
100	64	Low Refresh Rate #2(40-hz)	2	8	0010	1000	40		
101	65	Brightness(1/10nit)	1	4	0001	0100	20		
102	66	Feature flag(TN mode)	0	1	0000	0001	1		
103	67	Reserved 00h	0	0	0000	0000	0		
104	68	EISA manufacturer code(3 Character ID)	3	2	0011	0010	LPL		
105	69	Compressed ASCII	0	C	0000	1100			
106	6A	Panel Supplier Reserved - Product code	0	0	0000	0000			
107	6B	(Hex, LSB first)	0	0	0000	0000			



Product Specification

**APPENDIX B. Special Statements for LP154W02 of Lenovo's Notebook**

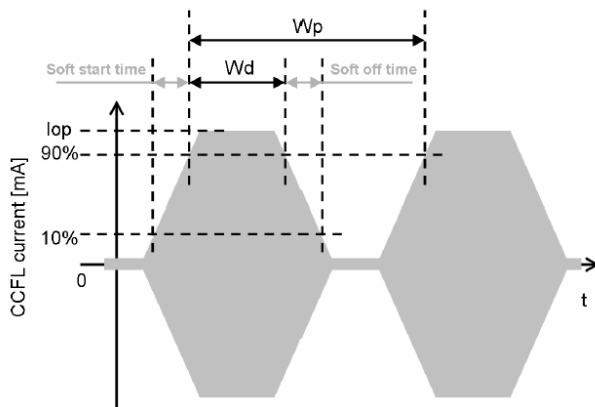
**1. Maximum Leakage Current of CCFL**

The lamp leakage current is measured by the current difference between input and output current, whereas the output current is set at 6.0 mA.

Parameter	Symbol	Values			Unit	Notes
		Min	Typ	Max		
Maximum Leakage Current	$I_L$		1.2	1.7	mA	

**2. Minimum CCFL Current**

In case of inverter using PWM (Pulse Width Modulation) dimming control method, the duty ratio will be varied from 100%(maximum brightness) to 15%(minimum brightness). CCFL will work from 15% to 100% duty ratio without any problems including specified CCFL reliability when any requirements for CCFL are observed at the whole specified range of duty ratio. The duty ratio is defined as follows,



$15\% \leq \text{Duty ratio} \leq 100\%$

$\text{Duty ratio}[\%] = Wd [\text{msec}] / Wp [\text{msec}] \times 100$

Duty ratio does not include soft start time / soft off time.

Where:

Wd : Duty time [msec]

Wp : Width of PWM frequency [msec]

Iop : Peak current at maximum brightness [mA]

**3.Refresh Rate for Power Saving Mode**

In this documentation, all reliabilities are specified for timing specification based on refresh rate of 60Hz. However, LP154W02 has a good actual performance even at lower refresh rate( eg. 40Hz or 50Hz) for power saving mode, whereas LP154W02 is secured only for function under lower refresh rate. 60Hz at Normal mode, 50Hz ,40 Hz at Power save mode. Don't care Flicker level (power save mode).

**4. Power Sequence for T4 and T7**

In this documentation, power sequence is specified differently compared with LPL's standard power sequence. LP154W02 is believed that there is no problem for current power sequence specification. However, LG.Philips LCD always recommends standard power sequence for more stable operation, specially, Min. 200[msec] for T4 and Min. 400[msec] for T7.

**5. White Color Shift**

White Color shift at 12,000 hours lifetime should be within +0.04 for both x and y from the initial value.